

Test Report



Report No. A2190204849101001

Applicant SHENZHEN XIN HUASHUN PLASTIC NEW MATERIAL CO. LTD//
DONGGUAN SHUNHUAXIN RUBBER AND PLASTIC NEW MATERIALS CO., LTD

Address LONGGANG DISTRICT, BANTIAN CITY, SHENZHEN SOUTH ROAD, NO. 12, NO. 1
BUILDING, A / BUILDING 1, NO.2 SHENGSHENG ROAD, TANGXIA TOWN, DONGGUAN
CITY, GUANGDONG PROVINCE

The following sample(s) and sample information was/were submitted and identified by/on the behalf of the client

Sample Name Silica gel ink
Material 白色
Sample Received Date Aug. 9, 2019
Testing Period Aug. 9, 2019 to Aug. 14, 2019

Test Requested As specified by client, to test Lead(Pb), Cadmium(Cd), Mercury(Hg), Hexavalent Chromium(Cr(VI)), Polybrominated Biphenyls(PBBs), Polybrominated Diphenyl Ethers (PBDEs), Phthalates (DBP, BBP, DEHP, DIBP) in the submitted sample(s).

Test Method Please refer to the following page(s).

Test Result(s) Please refer to the following page(s).



Tested by

Lily Li

Approved by

Hill Zheng

Hill Zheng
Technical Manager

Reviewed by

Ophelie Wen

Date

Aug. 14, 2019

No. R294341692

Test Report

Report No. A2190204849101001

Page 2 of 7

Test Method

Test Item(s)	Test Method	Measured Equipment(s)
Lead(Pb)	IEC 62321-5:2013	ICP-OES
Cadmium(Cd)	IEC 62321-5:2013	ICP-OES
Mercury(Hg)	IEC 62321-4:2013+AMD1:2017 CSV	ICP-OES
Hexavalent Chromium(Cr(VI))	IEC 62321-7-2:2017 and/or determination of Total Chromium by IEC 62321-5:2013	UV-Vis/ICP-OES
Polybrominated Biphenyls(PBBs)	IEC 62321-6:2015	GC-MS
Polybrominated Diphenyl Ethers (PBDEs)	IEC 62321-6:2015	GC-MS
Phthalates (DBP, BBP, DEHP, DIBP)	IEC 62321-8:2017	GC-MS

Test Report

Report No. A2190204849101001

Page 3 of 7

Test Result(s)

Tested Item(s)	Result	MDL
Lead(Pb)	N.D.	2 mg/kg
Cadmium(Cd)	N.D.	2 mg/kg
Mercury(Hg)	N.D.	2 mg/kg
Hexavalent Chromium(Cr(VI))	N.D.	8 mg/kg
Tested Item(s)	Result	MDL
Polybrominated Biphenyls(PBBs)		
Monobromobiphenyl	N.D.	5 mg/kg
Dibromobiphenyl	N.D.	5 mg/kg
Tribromobiphenyl	N.D.	5 mg/kg
Tetrabromobiphenyl	N.D.	5 mg/kg
Pentabromobiphenyl	N.D.	5 mg/kg
Hexabromobiphenyl	N.D.	5 mg/kg
Heptabromobiphenyl	N.D.	5 mg/kg
Octabromobiphenyl	N.D.	5 mg/kg
Nonabromobiphenyl	N.D.	5 mg/kg
Decabromobiphenyl	N.D.	5 mg/kg
Tested Item(s)	Result	MDL
Polybrominated Diphenyl Ethers (PBDEs)		
Monobromodiphenyl ether	N.D.	5 mg/kg
Dibromodiphenyl ether	N.D.	5 mg/kg
Tribromodiphenyl ether	N.D.	5 mg/kg
Tetrabromodiphenyl ether	N.D.	5 mg/kg
Pentabromodiphenyl ether	N.D.	5 mg/kg
Hexabromodiphenyl ether	N.D.	5 mg/kg
Heptabromodiphenyl ether	N.D.	5 mg/kg
Octabromodiphenyl ether	N.D.	5 mg/kg
Nonabromodiphenyl ether	N.D.	5 mg/kg
Decabromodiphenyl ether	N.D.	5 mg/kg

Test Report

Report No. A2190204849101001

Page 4 of 7

Test Result(s)

Tested Item(s)	Result	MDL
Phthalates (DBP, BBP, DEHP, DIBP)		
Dibutyl phthalate(DBP) CAS#:84-74-2	N.D.	50 mg/kg
Butyl benzyl phthalate(BBP) CAS#:85-68-7	N.D.	50 mg/kg
Di-(2-ethylhexyl) phthalate(DEHP) CAS#:117-81-7	N.D.	50 mg/kg
Diisobutyl phthalate(DIBP) CAS#:84-69-5	N.D.	50 mg/kg

Sample/Part Description White paste(Dry weight)

Remark: The sample(s) had been dissolved totally tested for Lead, Cadmium, Mercury.

-MDL = Method Detection Limit

-N.D. = Not Detected (<MDL)

-mg/kg = ppm = parts per million

-The sample was tested after drying for 2 hours under 105°C.

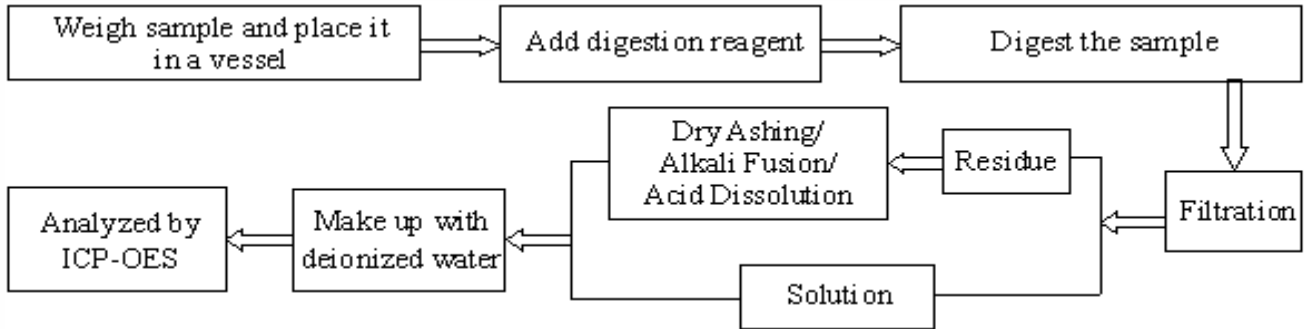
Test Report

Report No. A2190204849101001

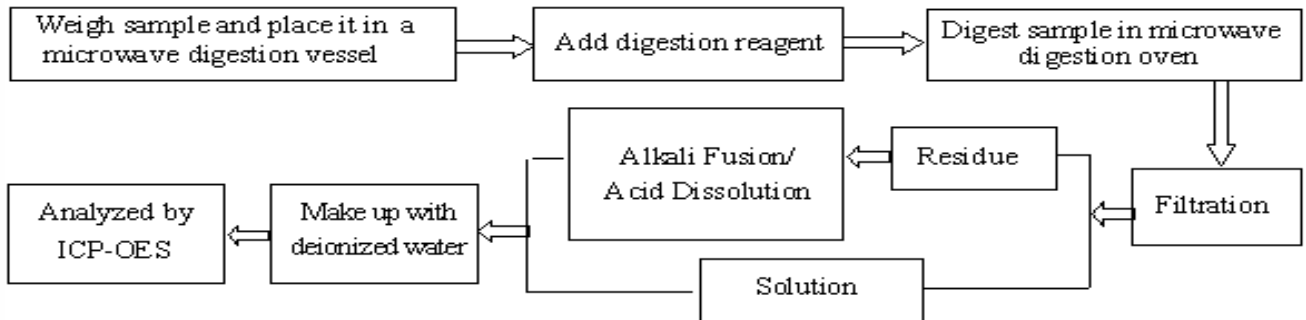
Page 5 of 7

Test Process

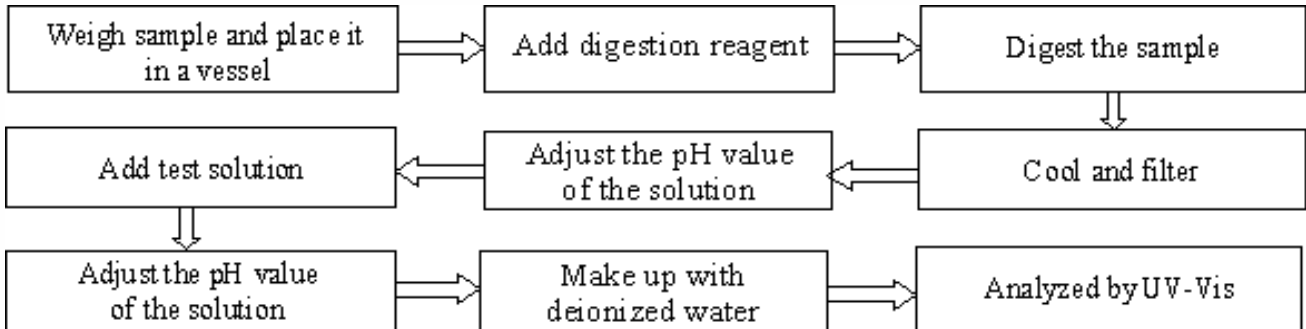
1. Lead(Pb), Cadmium(Cd), Chromium(Cr)



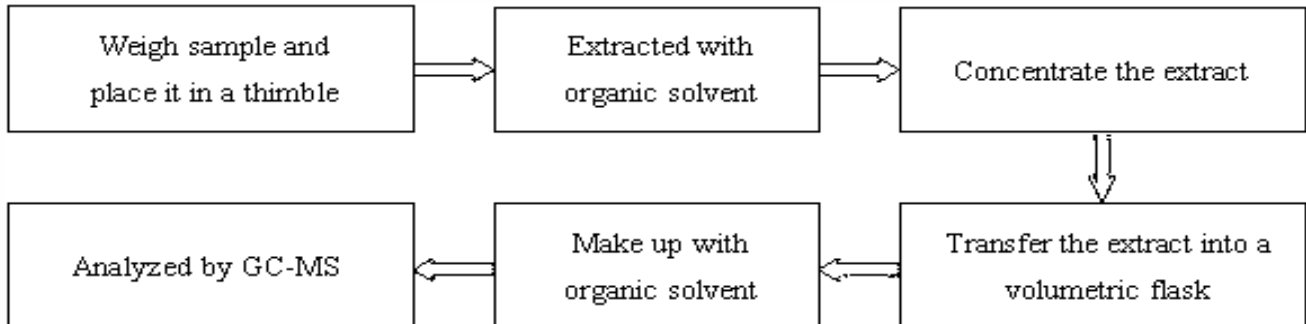
2. Mercury(Hg)



3. Hexavalent Chromium(Cr(VI))



4. Polybrominated Biphenyls(PBBs), Polybrominated Diphenyl Ethers (PBDEs)

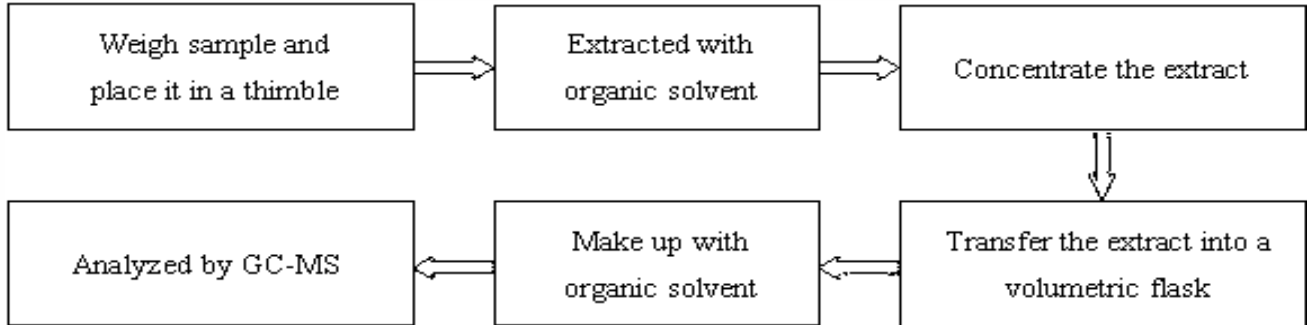


Test Report

Report No. A2190204849101001

Page 6 of 7

5. Phthalates (DBP, BBP, DEHP, DIBP)



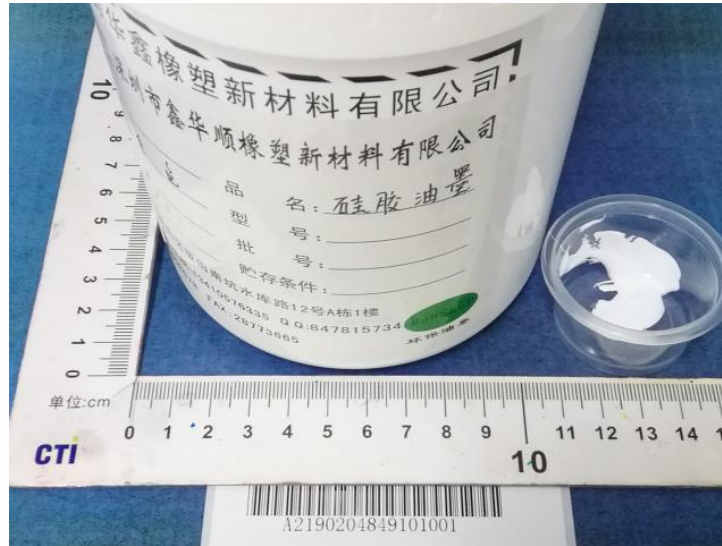
有限公司

Test Report

Report No. A2190204849101001

Page 7 of 7

Photo(s) of the sample(s)



*** End of report ***

Statement:

1. This report is considered invalid without approved signature, special seal and the seal on the perforation;
2. The sample(s) and sample information was/were provided by the client who should be responsible for the authenticity which CTI hasn't verified;
3. The result(s) shown in this report refer(s) only to the sample(s) tested;
4. Without written approval of CTI, this report can't be reproduced except in full;
5. In case of any discrepancy between the English version and Chinese version of the testing reports (if generated), the Chinese version shall prevail.